



DirectTrust Updates

THSA Mini Interoperability Summit
February 2025



To Highlight

- Quick Overview of DirectTrust
- Direct Secure Messaging Growth
- Opportunities for Direct
 - Directory Improvement Initiative
 - 360X
- How DirectTrust fits into the Interoperability Landscape with TEFCA
 - Certificate Issuance Services

To Highlight:

 <p>DirectTrust®</p> <p>Quick Overview of DirectTrust</p>		 <p>DirectTrust®</p> <p>Direct Secure Messaging Growth</p>	
 <p>DirectTrust®</p> <p>Opportunities for Direct</p>		 <p>DirectTrust®</p> <p>How DirectTrust fits into TEFCA</p> <p>Certificate Issuance</p>	



Quick Overview of DirectTrust



Global Edition [Electronic Health Records \(EHR, EMR\)](#)

EHR vendors still falling short on interoperability, data integration

The need to sift through external data is still vexing clinicians, according to a new KLAS Arch Collaborative report. But refinement of data-sharing standards – and further EHR training – could improve interoperability and provider satisfaction.

By [Andrea Fox](#) | September 13, 2024 | 12:01 PM



Hospitals face looming interoperability threat

Laura Dyrda (Twitter) - Thursday, September 12th, 2024

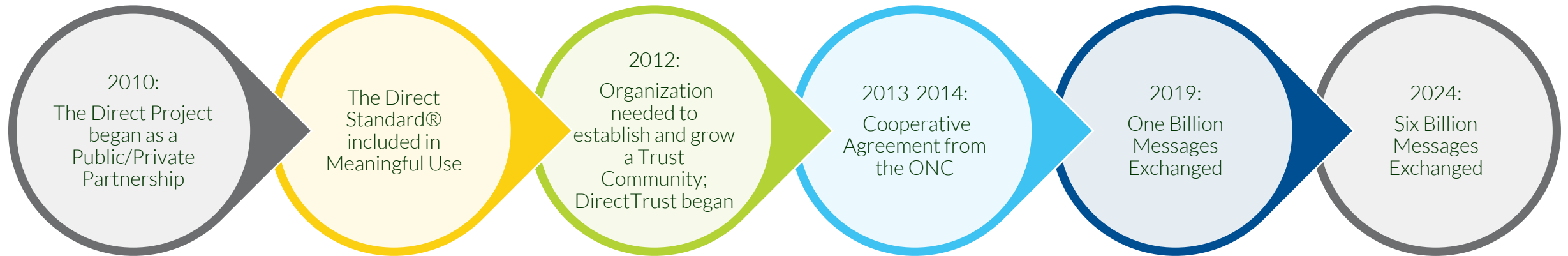
Save Post Tweet Share Listen Text Size Print Email

Healthcare interoperability is easier said than done.

Why we are here

“It’s not fairy dust!” – Katherine Lusk

Our Direct Secure Messaging History



What is a Trust Framework?

Policies

The common set of minimum requirements (policies) for network participants, identity providers, or users. The policies are published, allowing organizations that depend on those policies to conduct business to make a determination concerning trust.

Example: DirectTrust Certificate Policy

Certification

The process of ensuring adherence to all Trust Framework requirements. DirectTrust federates trust by accrediting HISPs, Certificate Authorities, and Registration Authorities. Issuers within trust in identity environments are approved or revoked through regular audits and monitoring.

Interoperability

The ability for information or credentials to be accepted and used easily and seamlessly by using a common set of standards.



Infrastructure

The technical mechanisms of delivering a single source of truth of who/what is trusted.

Example: The DirectTrust Aggregated Directory

Legality

The minimum obligations for being in accordance with the law, and/or with verifying the validity of a human identity before binding it to a digital credential.

Technical Standards

DirectTrust Standards develops standards and specifications that, when adopted, enable and promote healthcare interoperability using Direct exchange and/or trust frameworks.

Examples: The Direct Standard, Trusted Instant Messaging Plus (TIM+), Event Notifications via Direct, DirectTrust Identity

DirectTrust's Four Focus Areas

As a non-profit, we're committed to establishing trust in a connected world through four areas:



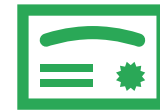
Membership

Gathering health and cybersecurity constituents in community to develop policy and best practices, share knowledge, and advance industry efforts



Standards

Developing conformity practices for disparate organizations to trust, communicate, and exchange with each other



Accreditation

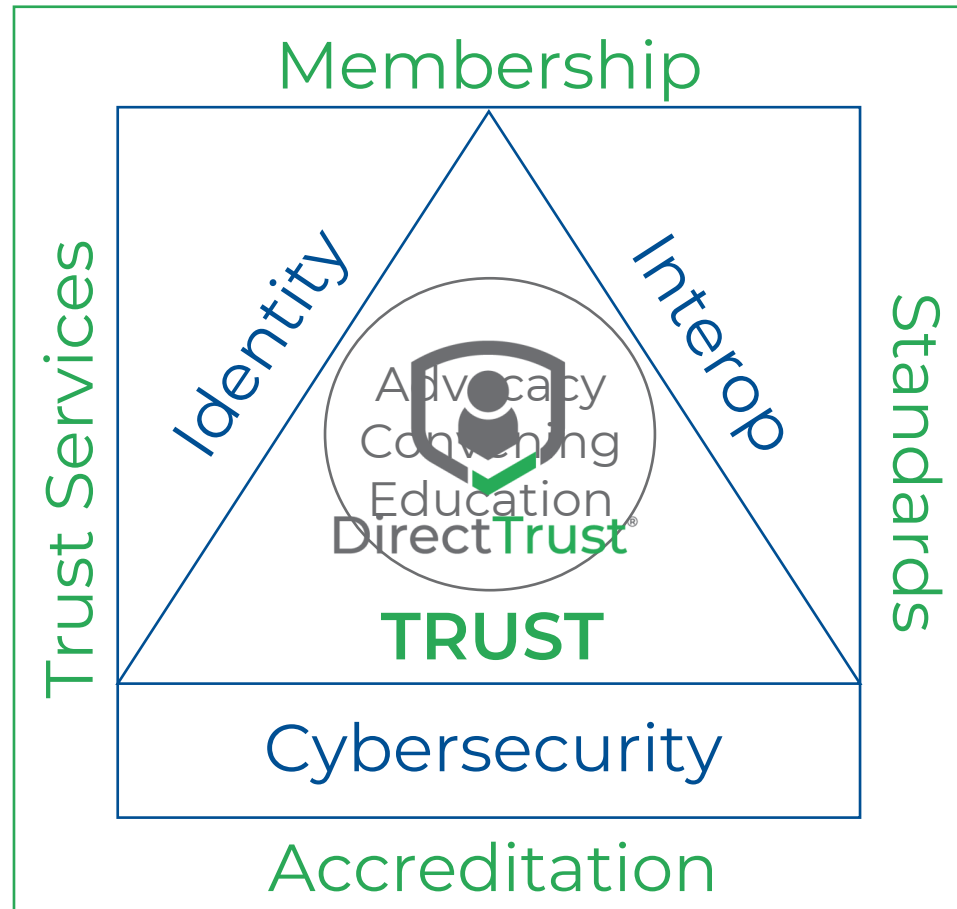
Verifying and certifying conformance with established policies and criteria governed by EHNAC (Electronic Healthcare Network Accreditation Commission)



Trust Services

Supporting industry through HITRUST assessment, trust frameworks, promoting identity proofing/credentials, network facilitation, Directory services, certificate issuance

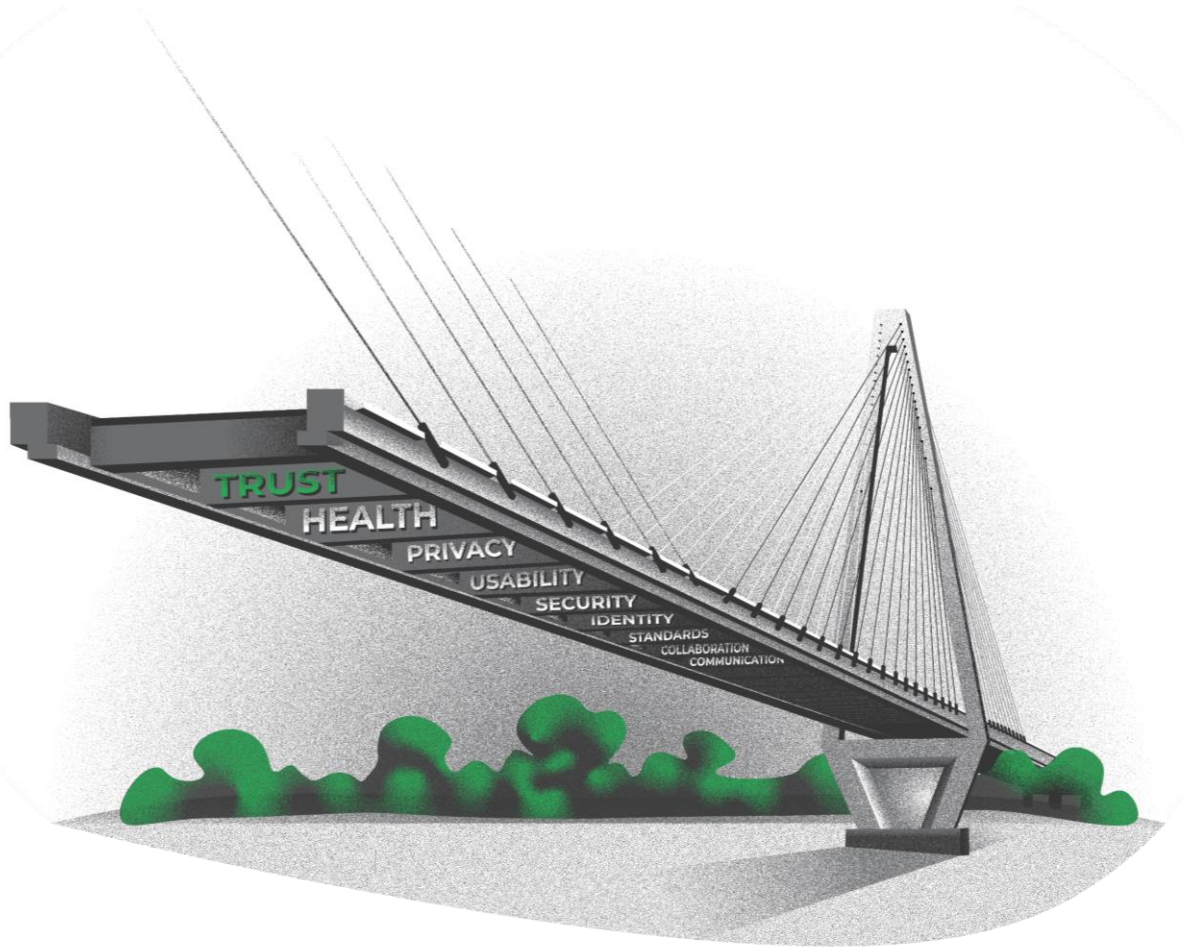
DirectTrust's Role



Example: Event Notifications via Direct Consensus Body Members in 2020

40+ organizations and individuals contributed





Understanding National Interoperability Frameworks and Networks



Direct Secure Messaging Growth



Direct Secure Messaging over the **DirectTrust** Network

Exchange flows directly from and to known trusted recipients over the internet

Understanding Direct

- Direct provides a trusted, secure, and widely deployed mechanism for the exchange of health information that's as easy as email or fax.
- Based on the ANSI approved Direct Standard®
- Simple, secure, scalable
- Payload agnostic – structured and non-structured data
- Authenticated, encrypted
- In practice: Embedded in EHR

The **DirectTrust** Network in Use

- Primary use case – Transitions of Care/Referrals/Consults
 - Provider to Provider
 - Curated
- Public Health Reporting
- Notifications Delivery
- LTPAC
- EMS Transfer to Hospital
- HIE Reporting
- So many more use cases!

Value of Direct Secure Messaging



In three different studies we found the following:
A paper referral coming into an organization usually follows this process:

- Sending MD see's patient in consult (day 1) and then creates an order which follows the normal system in an office taking 1-2 business days to facilitate (MA prints paper, does their normal stuff then faxes it)
- Then the receiving organization has a system to receive the fax, sort it and put it in a queue to work equaling 1 - 2 days.
- THEN if there is missing information (supporting clinical documentation) add a day to 2 days....

By using Direct, we easily shaved off 4-6 days AND hundreds of keystrokes.”

“We went from 10 minutes on an intake of a fax for a referral and didn’t even touch medications, to less than five minutes AND the provider gets the complete medication list. Instead of wasting valuable time during the patient appointment to manually enter in medication information, now the provider just has to click a button to verify and reconcile meds. **Less time, and more complete information!”**

Data Usability Workgroup Implementation Guide Version 2.0

Published December 11, 2024

From the Implementation Guide 2.0:

1.4.1.3. Sending systems **SHALL** develop a timeline for replacing FAX related workflows with electronic PUSH transactions leveraging the DIRECT Standards.



Our Most Recent Quarterly Metrics



3.5m+ DirectTrust Trusted Addresses



290k+ Organizations served by DirectTrust HISPs



412m+ Transactions between trusted DirectTrust endpoints last quarter



6B Cumulative messages sent and received through DirectTrust



Opportunities for Direct



360X

- Closed-Loop Referrals
 - 360X for Referral Management
 - Acute/Ambulatory Transfer to SNF
- Implementation happening!



Four Key Fields



NPI



Fax Number



Provider Specialty



SERV_DESC

Directory Updates



Result:

Compliance with the new Policy will drastically increase Directory access and usability by closing data gaps, ensuring users have a complete and current picture of the Directory, and enabling new use cases that promote interoperability

Directory Updates: Policy Impacts

HISP participation

- Report Card: 20/20
- Two HISPs are exempt (22 total HISPs)

Organization participation

- Attestation

Upload within 72 hours

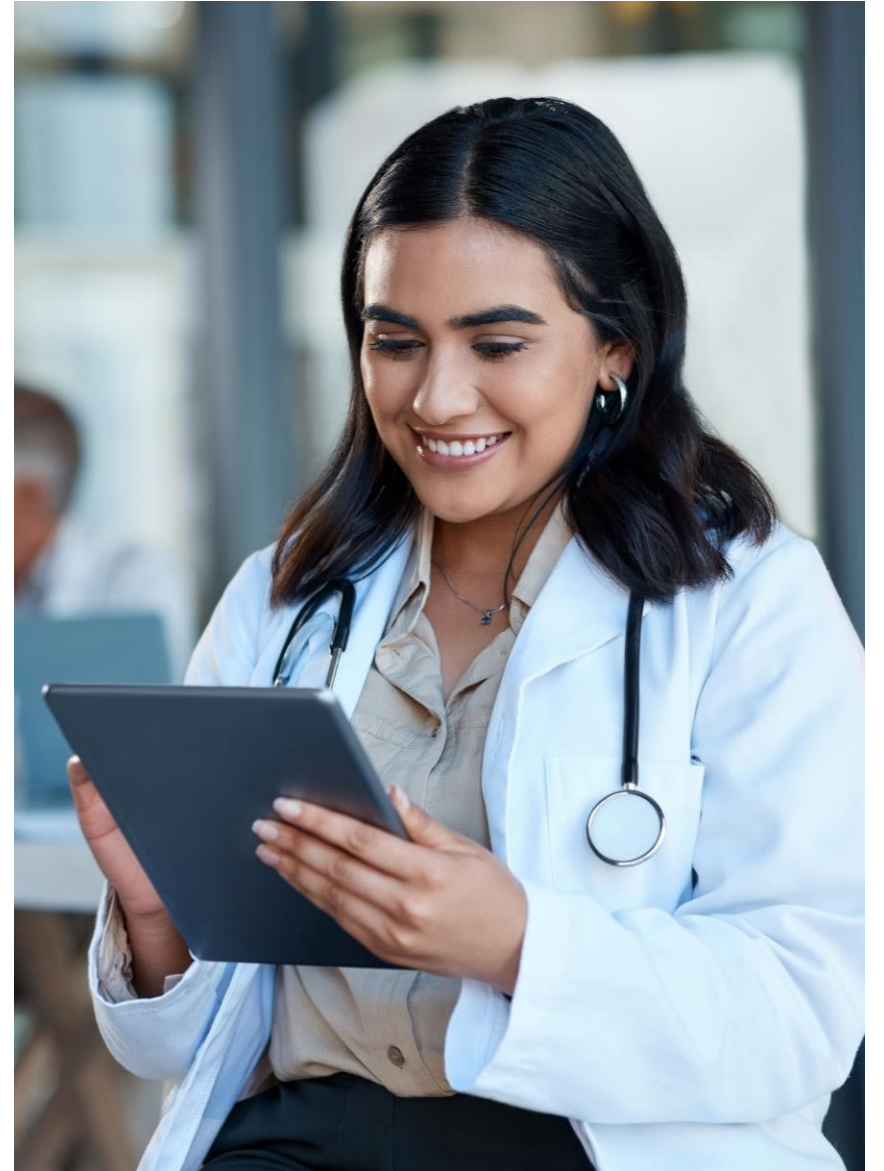
- Report Card: 20/20

Download within 72 hours

- Report Card: 20/20

Directory Updates: AWS Grant and Development

- Awarded AWS Health Equity Initiative grant for the second year in a row!
- In Development: A Directory search feature on the website
- Increasing access to quality addresses expedites information flow!





How DirectTrust fits into TEFCA

Certificate Issuance



What's Next for the Directory and How it Relates to TEFCA

Directory
mapping:
Direct
address to...

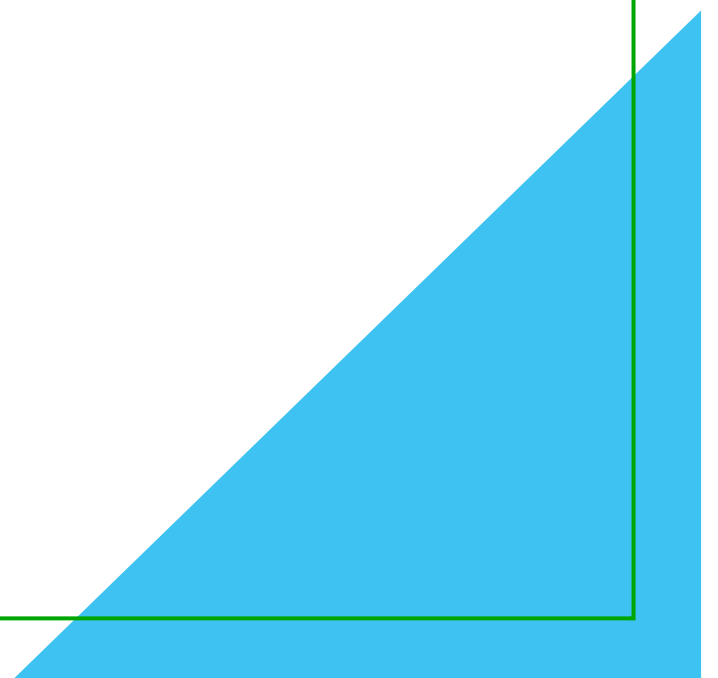
- FHIR endpoints
- Home Community ID for XCDR transactions

Outside
interest in
push
messaging
inside
QHINs

- XCDR standard required QHIN to QHIN
- No requirement of QHIN to participants/sub-participants, could use existing infrastructure of Direct if they knew how to map

Certificate Issuance

Behind-the-scenes technical trust



Trust for FHIR in the TEFCA Ecosystem

- FHIR connections require authentication, not just a secure pipe
- QHINs role quite different than with IHE-based query
- Organizational Identity needs to be ensured and automatically accepted
- Individual Identity for the IAS use case has to be supported as well

The screenshot shows a news article on the AccessWire website. The navigation bar includes 'ACCESSWIRE', 'ABOUT', 'PRODUCTS', 'NEWSROOM', 'RESOURCES', 'CUSTOMER REVIEWS', 'LOGIN', and a 'SUBMIT A PRESS RELEASE' button. The article title is 'DirectTrust Extends TEFCA Support with The Sequoia Project', dated Thursday, 19 September 2024 09:45 AM. The article content discusses a collaboration to deploy Public Key Infrastructure for TEFCA Facilitated FHIR, involving DirectTrust and The Sequoia Project. The article is categorized as a 'Company Update' and includes social media sharing options for LinkedIn, Facebook, and Twitter.

ACCESSWIRE ABOUT ▾ PRODUCTS ▾ **NEWSROOM** RESOURCES ▾ CUSTOMER REVIEWS LOGIN [SUBMIT A PRESS RELEASE](#)

DirectTrust Extends TEFCA Support with The Sequoia Project

Thursday, 19 September 2024 09:45 AM

DirectTrust

DirectTrust

Topic: **Company Update** Share this Article [in](#) [f](#) [x](#)

Collaboration to deploy Public Key Infrastructure for TEFCA Facilitated FHIR; govern accredited Certificate Authorities to serve QHINs under TEFCA

WASHINGTON, DC / ACCESSWIRE / September 19, 2024 / DirectTrust®, a non-profit healthcare industry alliance focused on furthering trust in healthcare data exchange through standards, accreditation, and other services, today announced a strategic agreement with The Sequoia Project®, the Recognized Coordinating Entity® (RCE™) for the Trusted Exchange Framework and Common Agreement™ (TEFCA™). DirectTrust will deploy Public Key Infrastructure (PKI) that will support TEFCA Facilitated Health Level Seven (HL7®) Fast Healthcare Interoperability Resources (FHIR®) as well as govern DirectTrust accredited Certificate Authorities (CAs) to serve the Qualified Health Information Networks™ (QHINs™) under TEFCA.

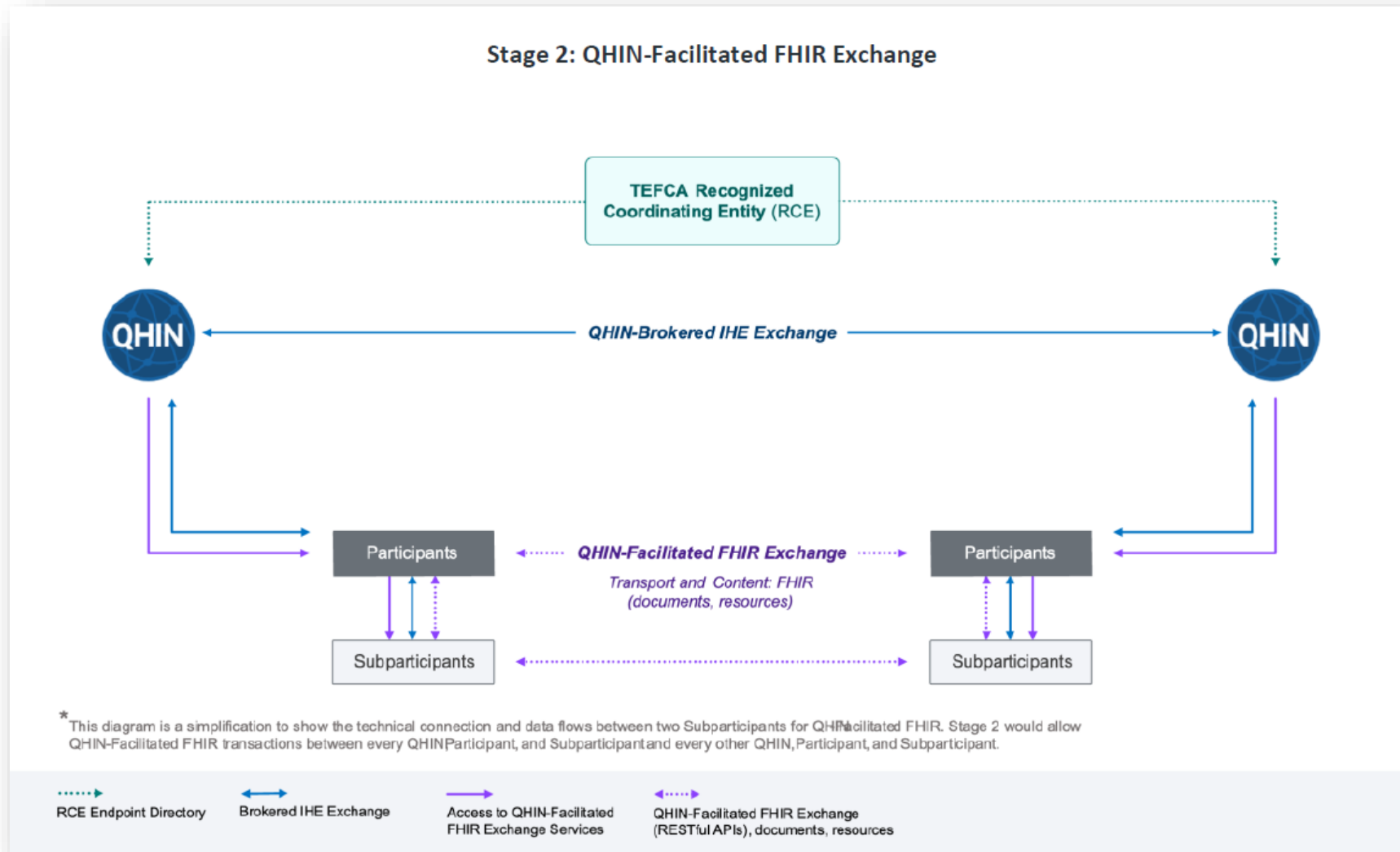
TEFCA FHIR Roadmap



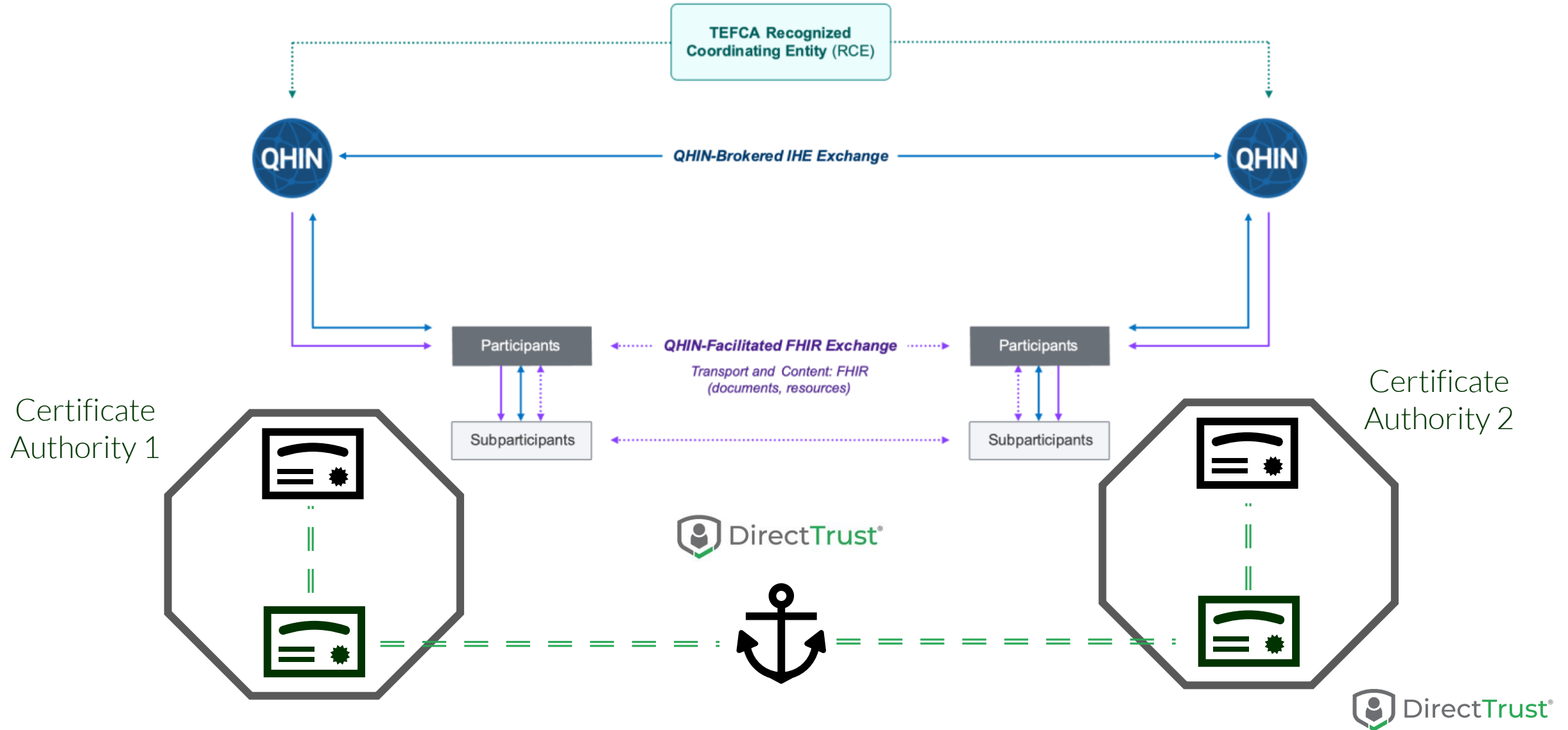
TEFCA FHIR Roadmap: Stage 1



TEFCA FHIR Roadmap: Stage 2

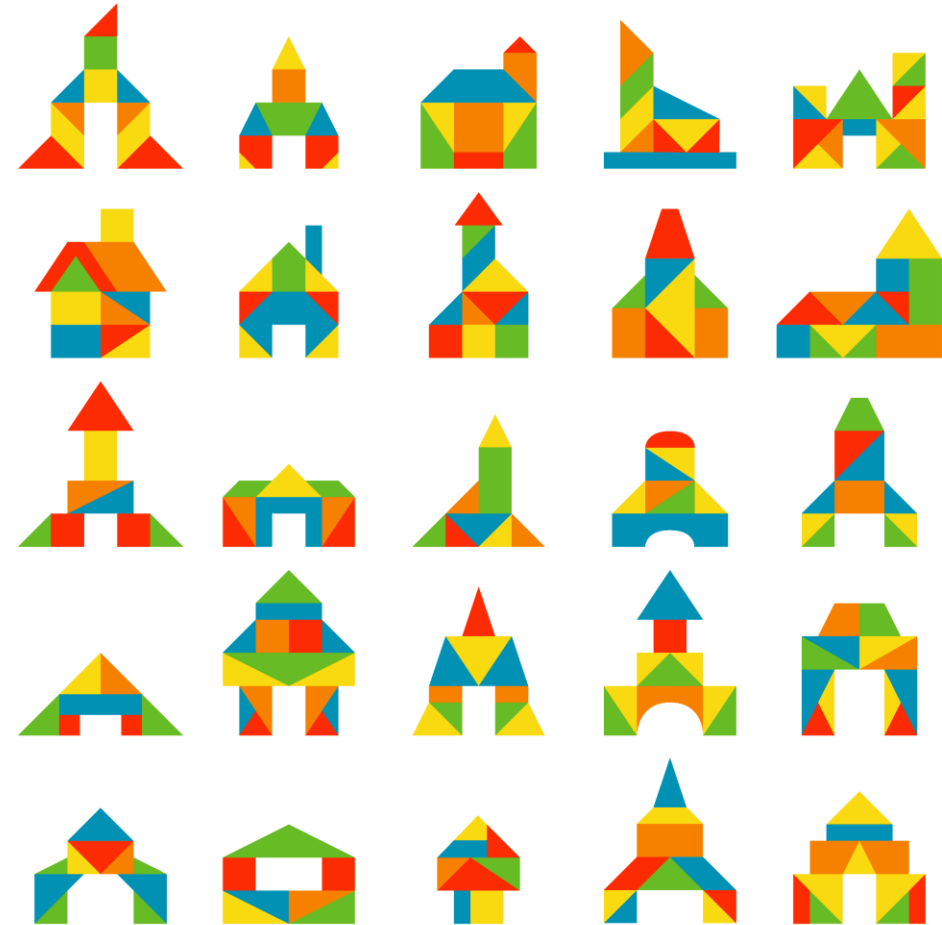


DirectTrust Facilitated FHIR Certificate Issuance Support



A Piece of the Bigger Puzzle

Understanding National Interoperability Frameworks and Networks





Contact Information

**Kathryn Ayers Wickenhauser,
MBA, FACHDM, CHPC**

Chief Strategy Officer

Kathryn.Wickenhauser@DirectTrust.org